



CONNECTOR  
MANUFACTURING  
COMPANY

# CMC<sup>®</sup>

## CAPABILITIES

A | 3501 Symmes Road Hamilton, OH 45015

W | [www.cmclugs.com](http://www.cmclugs.com)

P | (513) 860-4455



# ABOUT CMC<sup>®</sup>

---

**Acquired by Hubbell in 2013, Connector Manufacturing Company (CMC<sup>®</sup>) is a full line manufacturer of aluminum and copper connectors, poleline hardware and Barfield enclosures.**

Products are marketed to utility companies, original equipment manufacturers (OEM's), renewable markets and commercial/industrial accounts. In addition to its utility products, CMC manufactures connectors for meter socket terminals, load center neutral bars, switch gear terminations, commercial panel boards, circuit breakers, motor controls and pole line hardware, wind energy products, solar energy products, and Barfield enclosures.

With a goal of building strong partnerships with our customers, CMC's on-the ground sales team personally deliver a focus on the entire CMC family of products. They have intricate product knowledge and open communication lines that provide fast answers to any questions. We have been, and continue to be, focused on providing solutions to the most challenging requirements.

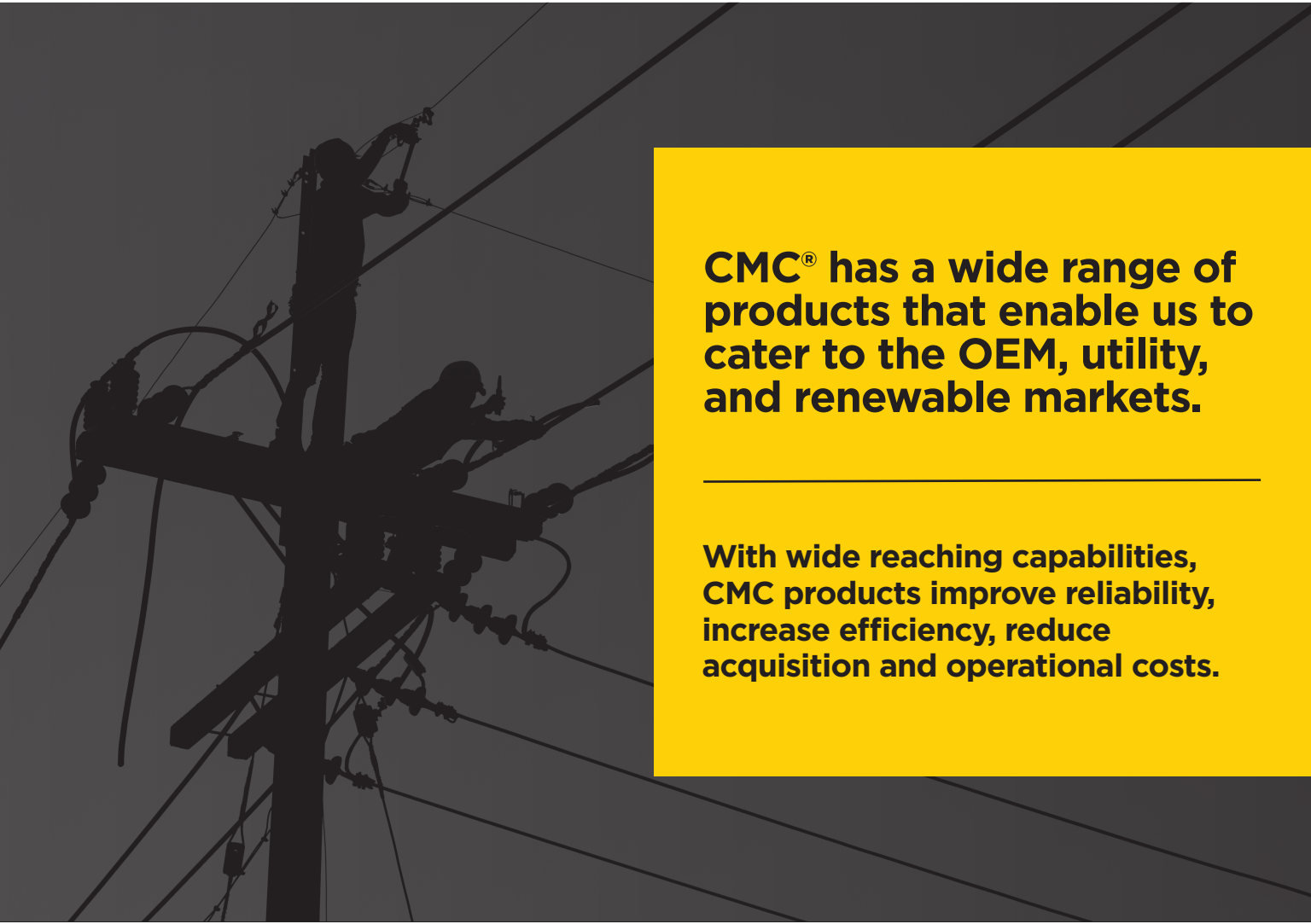






**CMC<sup>®</sup> Headquarters**  
Hamilton, Ohio

# MARKETS



**CMC® has a wide range of products that enable us to cater to the OEM, utility, and renewable markets.**

---

**With wide reaching capabilities, CMC products improve reliability, increase efficiency, reduce acquisition and operational costs.**



Complete in-house engineering  
and design team



Customer service that consistently  
provides personalized service to our  
valued distributors and customers



Certified “third-party” test facility  
equipped to perform UL, ANSI, and  
CSA test requirements



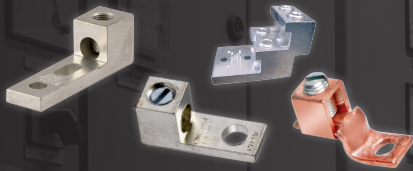


# PRODUCTS

We are driven by an experienced Manufacturing & Quality team of engineers focused on Lean principle manufacturing.

## OEM

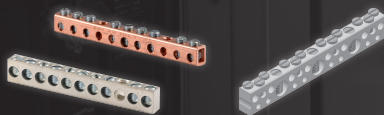
### MECHANICAL CONNECTORS



### BOX-STYLE LUGS

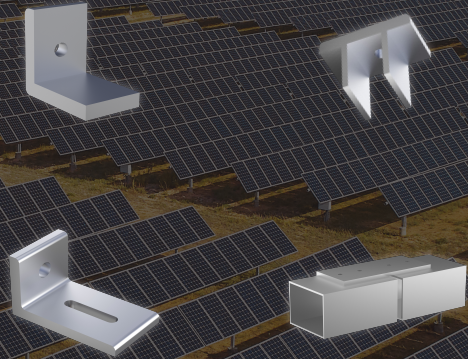


### NEUTRAL BARS



## SOLAR

### RESIDENTIAL, UTILITY, COMMERCIAL/INDUSTRIAL



Comprehensive system design, manufacturing, and logistical support for all types of solar racking systems in the U.S.



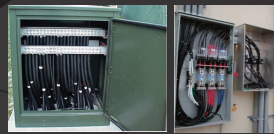
Connector Manufacturing Company (CMC®) is dedicated to the engineering, design, and manufacture of quality products for the OEM, utility, and renewable industries. We proudly offer products that are compliant to the REACH, ROHS and Prop65 requirements. Thanks to our long history, CMC® has a solid understanding of industry challenges and offers a broad range of solutions to better serve our customers.

# UTILITY

## TRANSFORMER CONNECTORS



## ENCLOSURES



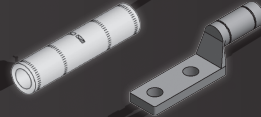
## METER AND GROUNDING



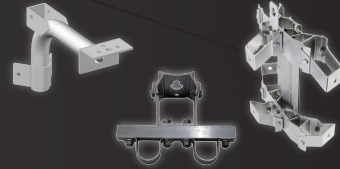
## SUBMERSIBLES



## COMPRESSION CONNECTORS



## POLE LINE EQUIPMENT



## PEDESTAL CONNECTORS



## OVERHEAD CONNECTORS



## PLATFORMS



## FIBER OPTIC



## METER PEDESTALS



## SPLICE CABINETS

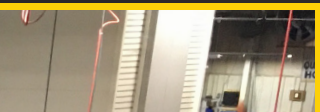




# MANUFACTURING

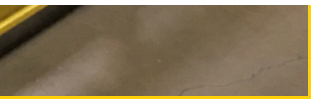






**With over 70 years of experience, CMC® sits at the top of the industry in manufacturing through continued investment in advanced technologies.**  
These include:

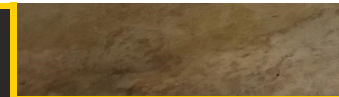
- Horizontal 4-axis CNC machining centers with pallet changers
- Vertical 3-axis CNC machining centers with pallet changers
- Automatic saws
- Automatic screw machines with capacity up to 1 ¼
- Punch presses with capacity up to 200 ton
- 3-axis high speed punch turrets
- Multiple axis high-speed press brakes
- Powder coat line equipped with wash bay, powder coat booth, and 2 ovens -
- CMC has a fully equipped and staffed tool room for production of tools and dies
- CNC 3-Axis milling machines and 5 full 5-Axis contoured CNC milling machines.





**CMC® is surpassing industry standards in Lab Testing by operating one of the industry's most comprehensive third-party testing facilities in the United States.** The CMC lab is qualified under the ISO Guide 17025-2017 certification requirements for lab accreditation. We have teams of lab technicians at multiple lab facilities to perform tests that include:

- Electrical (current cycle, fault current, static heat)
- Mechanical (sustained load, pullout, secureness, fatigue)
- Environmental (freeze/thaw, salt spray)
- Metallurgical (grain structure, heat treatment, failure analysis) CMC is also involved in the standard development process with UL, CSA, ANSI, CANENA, NFPA, ESFI and NEMA Committees—this is designed to ensure that CMC products safely meet the challenges and requirements out in the field.



# TESTING







A proud member of the Hubbell family.

